



SOG LOGO IDENTIFICATION (TIGERSHARK)



SATIN, SANTA MONICA, CA.
PRODUCED 1988-1989



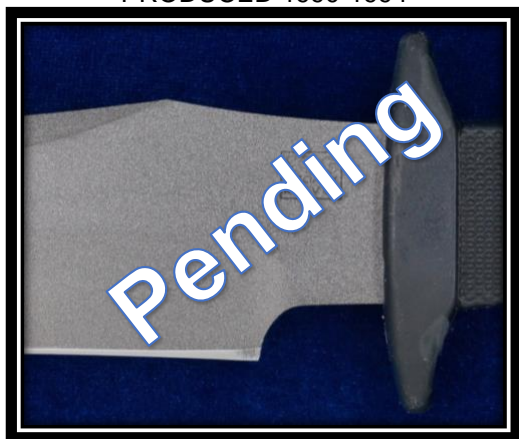
MIDNITE/GUN BLUED, SANTA MONICA, CA.
PRODUCED 1988-1989 (AKA MIDNITE TIGER)



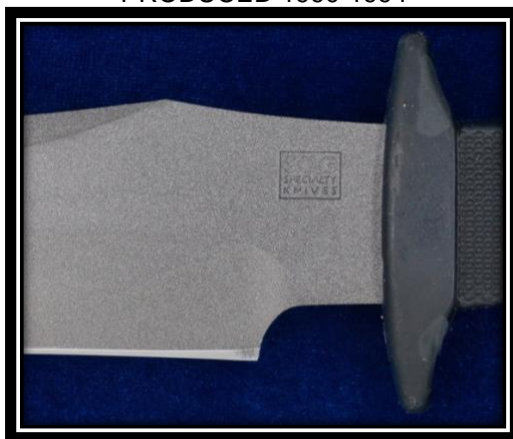
MODEL: N/A, SATIN, EDMONDS, WA.
PRODUCED 1990-1994



MIDNITE/GUN BLUED, EDMONDS, WA.
PRODUCED 1990-1994



POWDER COATED, EDMONDS, WA.,
PRODUCED: 1995-1996



MODEL S5, POWDER COATED, LYNNWOOD, WA.
PRODUCED 1996-1998



MODEL S5, POWDER COATED, LYNNWOOD, WA.
PRODUCED 1996-1998



MIDNITE/GUN BLUED, LYNNWOOD, WA.
PRODUCED 1994



MODEL S5, POWDER COATED W/2" SERRATION,
LYNNWOOD, WA, PRODUCED 2007



TIGERSHARK 2.0: MODEL TE01, POWDER COATED
W/2" SERRATION, LYNNWOOD, WA,
PRODUCED 2008-2011



TIGERSHARK ELITE 2.0, MODEL: TE02, TiNi COATED
W/2" SERRATION, LYNNWOOD, WA,
PRODUCED 2008-2013



TIGERSHARK 2.0: MODEL: N/A, POWDER COATED
W/2" SERRATION, LYNNWOOD, WA,
PRODUCED 2008

Note: This knife has the exact size/features as the Seal Team Elite, so it may have been a manufacturing error.